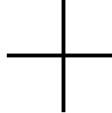
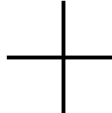


正样  
2023.10.07  
B00

Copyright: Copyright infringement reserved

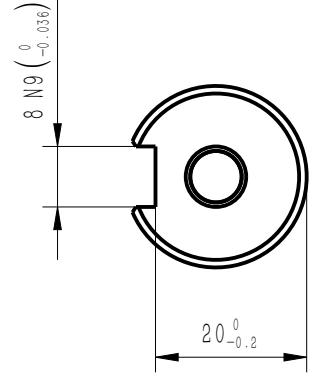
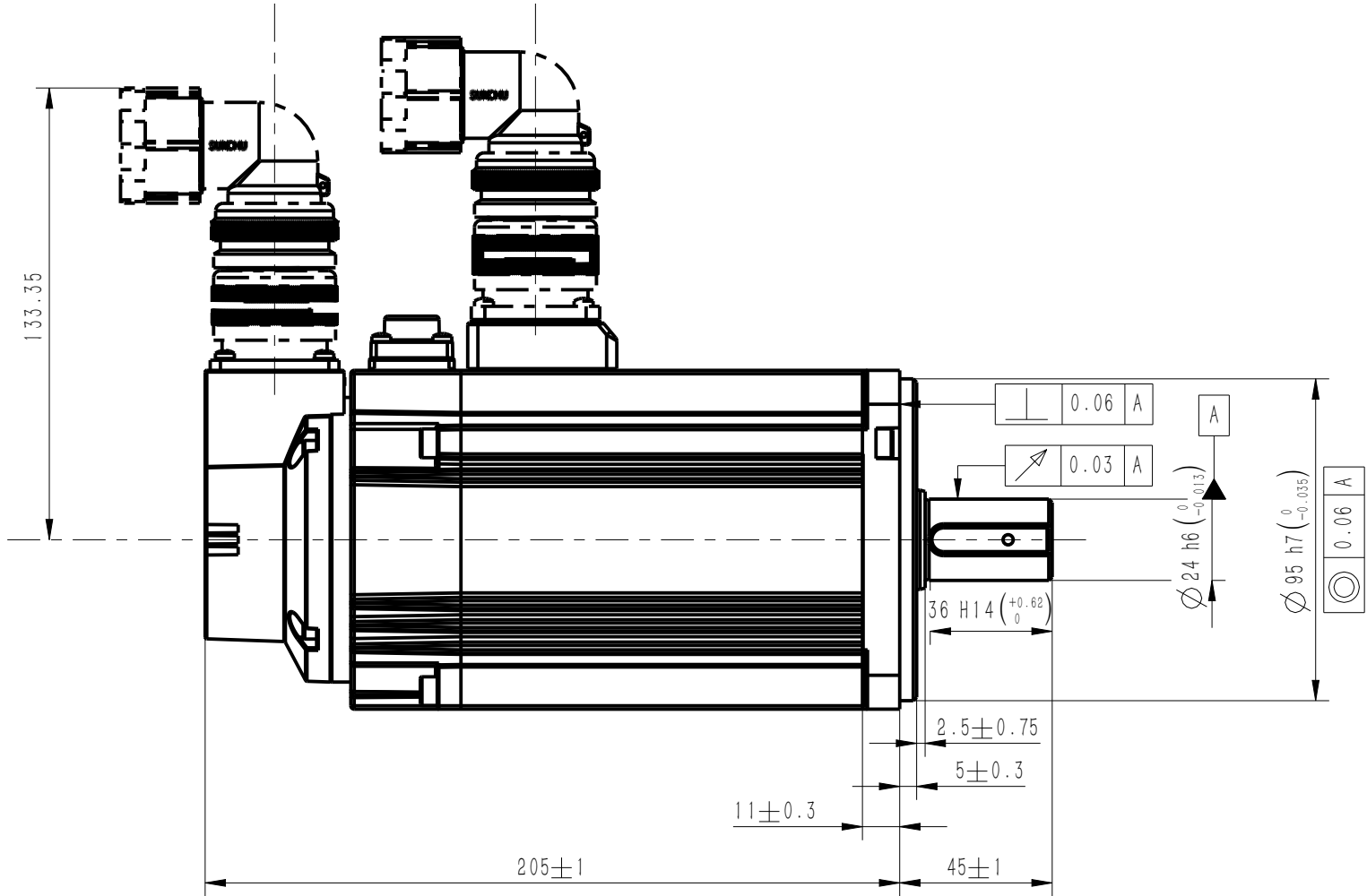
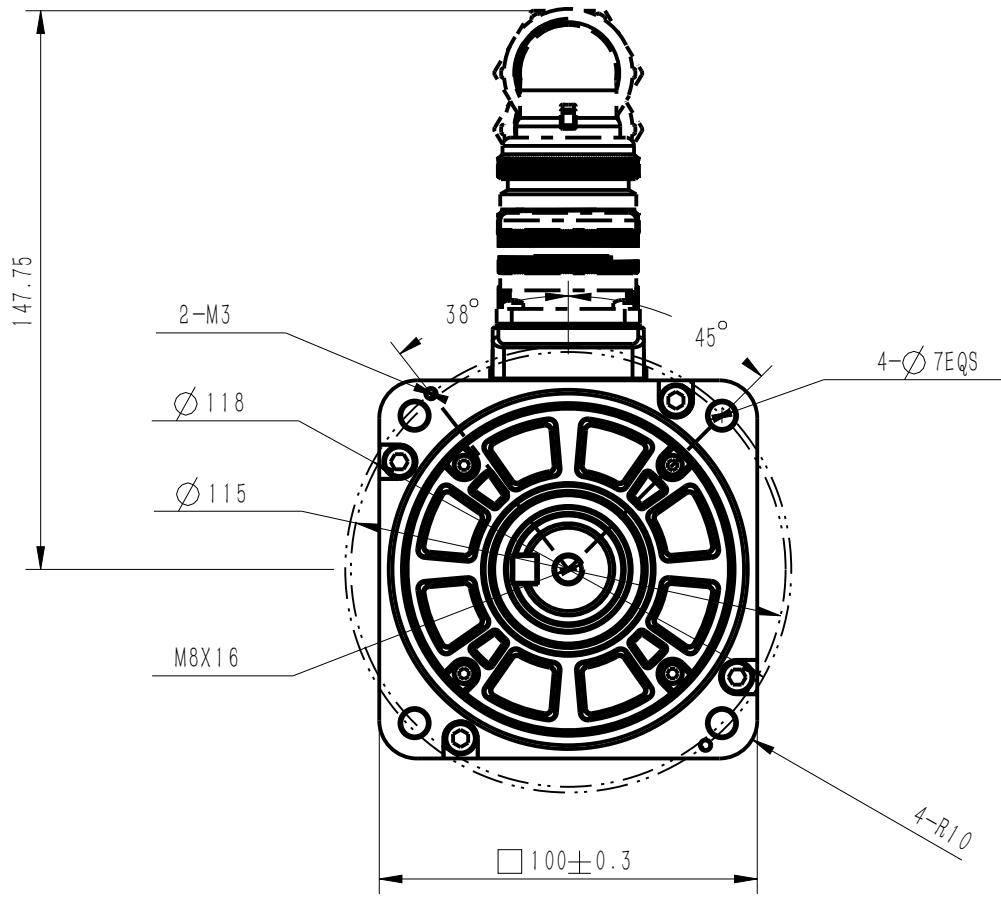


INOVANCE

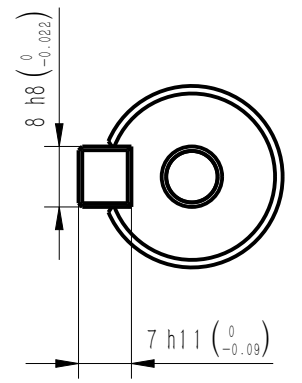
INOVANCE

外部公开

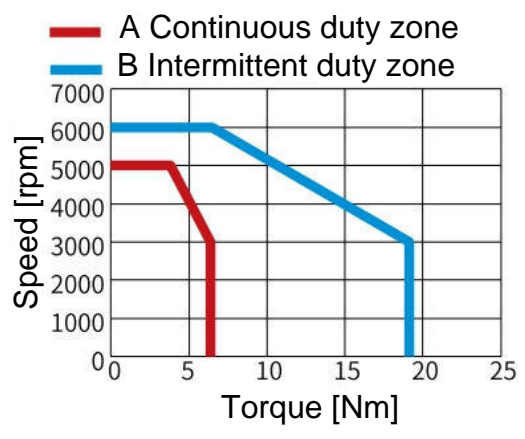
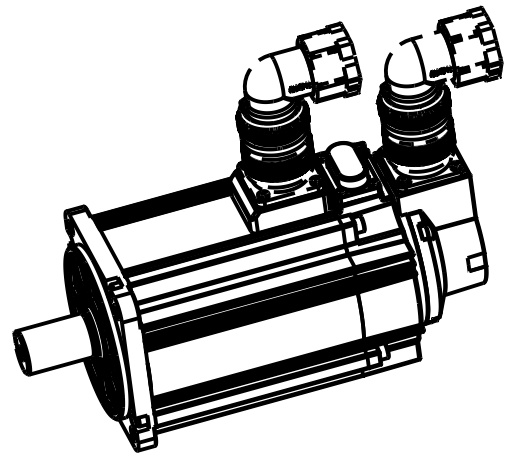
Amendment	Description




Dimension of shaft end



Dimension of shaft end with key



Basic function parameters	
Rated power kW	2.0
Rated voltage V	220
Rated current A	≤11.3
Pea current at rated speed A	≤42
Rated torque Nm	6.36
Peak torque at rated speed Nm	19.1
Rated speed rpm	1500
Max speed rpm	4500
Rotor inertia kg*cm <sup>2</sup>	3.74
Encoder resolution	26bit
insulation class	F
Protection level	IP67
Static torque of brake Nm	8
Brake power supply V	24(±10%)
duty cycle	S1
Radial line load N	≤686
Axial load N	≤196

				Motor Outline Drawing			01117894-WX	
B00	New Archive	/	20230916					
Version	Change method	Change by	Date					
Design	/			/			Mark	 <b>INOVANCE</b>
Check	/							
Craft	/							
Verify	/			Weight	Scale	Version	Page 1 of 1	
Standardization	/			kg	1 : 2	B00	Model	MS1H2-20C30CD-A634R-INT
Approve	/							